



For Lease



38 Mason Street

San Francisco, CA

Boutique brick and timber building

Two (2) full floor opportunities

2nd floor - ±3,026 RSF

Floors can be leased together or separately

Hardwood floors

Exposed brick throughout

High ceilings

Large operable windows with abundant natural light

Available September 2019

Walk Score of 99

Inquire with Broker for rate



Contact

Jim Walker

O 415-248-5388

M 415-515-2212

F 415-248-5387

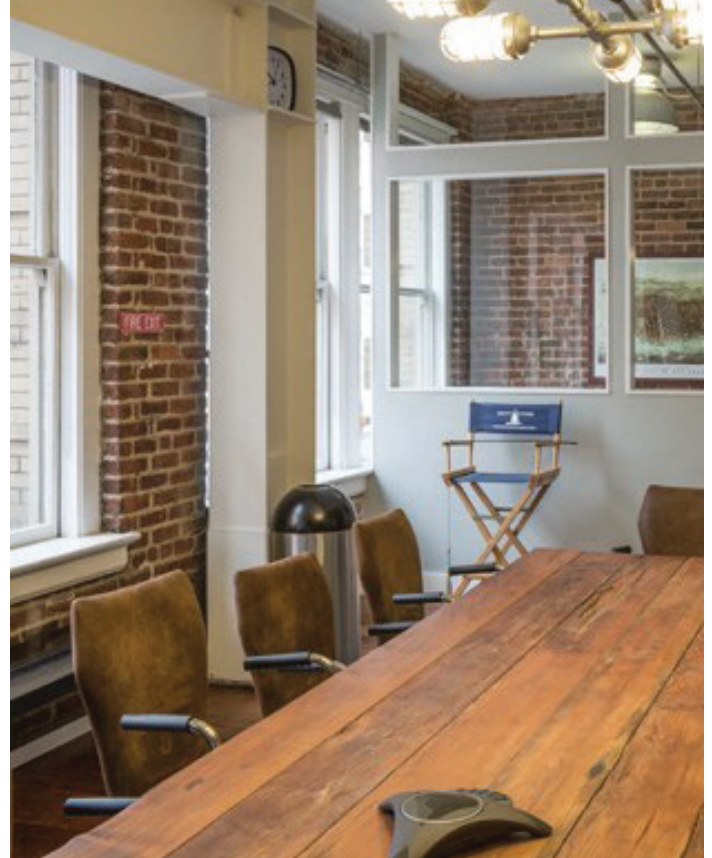
220 Montgomery Street, Suite 1920

San Francisco, CA 94104

CA DRE 01750435



38 Mason Street



Contact

Jim Walker

O 415-248-5388

M 415-515-2212

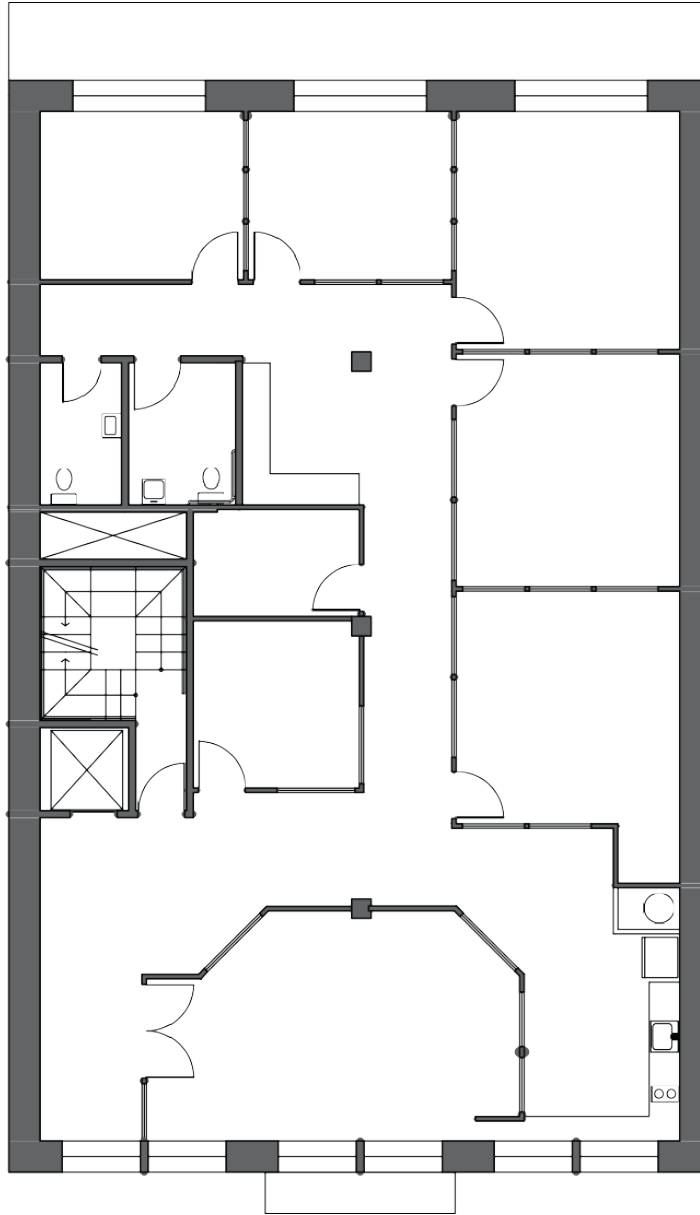
F 415-248-5387

220 Montgomery Street, Suite 1920
San Francisco, CA 94104

CA DRE 01750435



38 Mason Street



2ND FLOOR

Contact

Jim Walker

O 415-248-5388

M 415-515-2212

F 415-248-5387

220 Montgomery Street, Suite 1920
San Francisco, CA 94104

CA DRE 01750435



38 Mason Street



Contact

Jim Walker

O 415-248-5388

M 415-515-2212

F 415-248-5387

220 Montgomery Street, Suite 1920
San Francisco, CA 94104

CA DRE 01750435